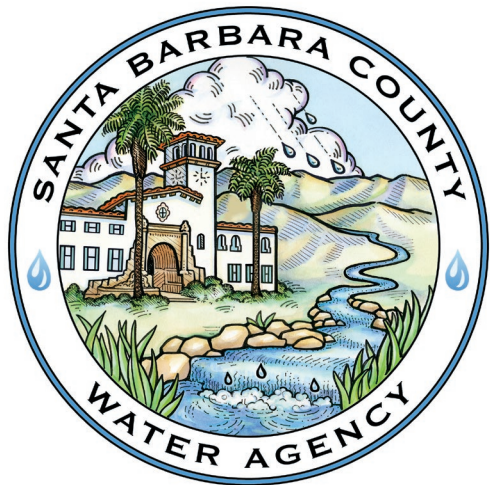


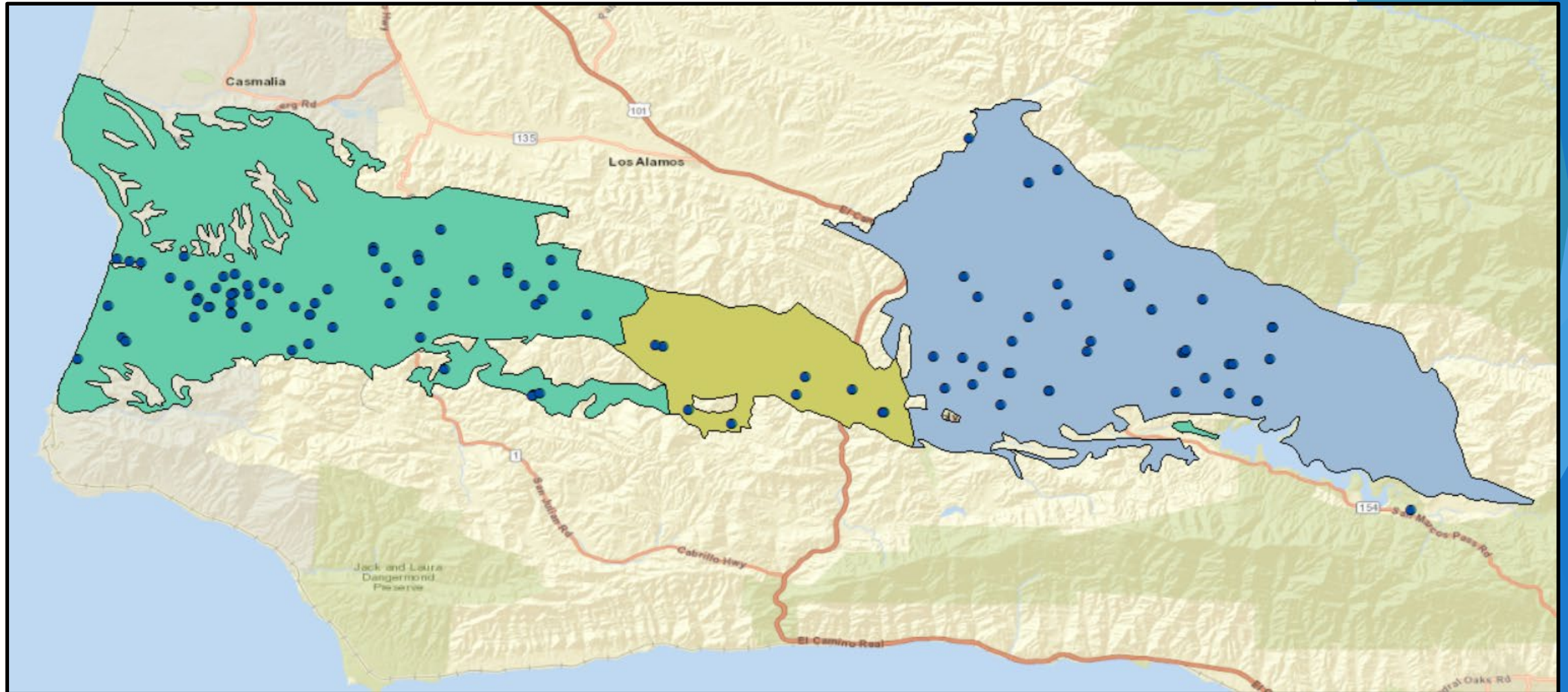
SANTA YNEZ RIVER VALLEY GROUNDWATER BASIN

CENTRAL MANAGEMENT AREA

OVERVIEW OF OCTOBER 2022 MEASUREMENTS

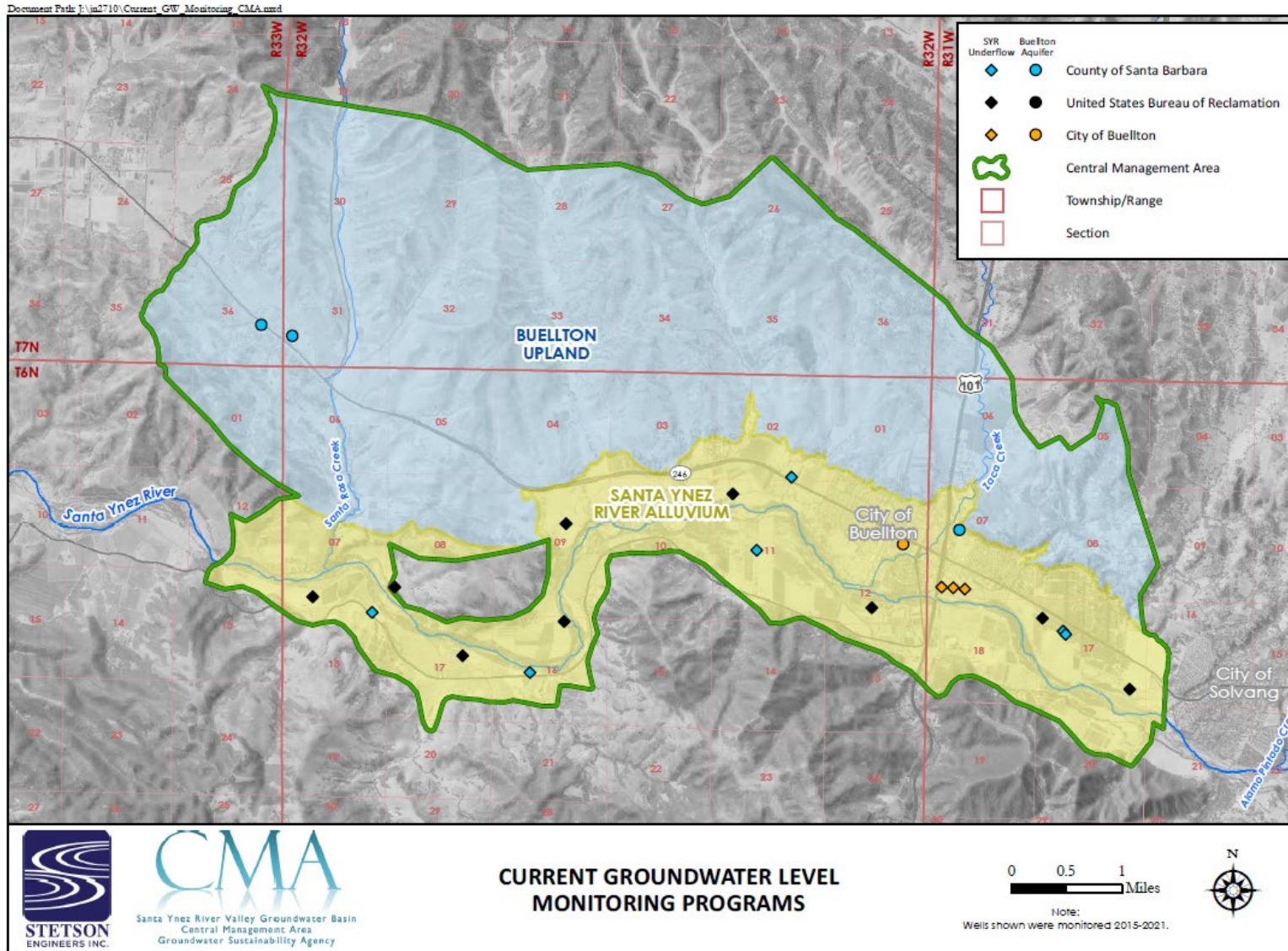


NETWORK OF 111 WELLS THROUGHOUT THE ENTIRE SANTA YNEZ GROUNDWATER BASIN



NETWORK OF 56 WELLS IN THE CMA

(XX ARE REPRESENTATIVE WELLS IN GSP)



- **Water level measurements** are taken biannually in March (hydrologic maximum) and October (hydrologic minimum)
- Depth below land surface elevation is adjusted to mean sea level
- Staff measured 12 wells in October 2022
- All 3 CMA representative wells were measured in October 2022
- Water levels decreased in 3 of 12 wells (25%)

OCTOBER 2022 CMA WATER LEVEL MEASUREMENTS SHOWING 1-YEAR CHANGE

WELL ID	MINIMUM THRESHOLD	WATER LEVEL ELEVATION (FT) SPRING 2022	WATER LEVEL ELEVATION FALL 2022
6N/31W-17F1		324.19	DRY
6N/31W-17F3		321.72	318.78
6N/31W-7F1	292.00	305.12	299.65
6N/32W-2Q1		297.18	297.29
6N/32W-11L4		NA	281.11
6N/32W-16P(?)		245.12	245.23
6N/32W-18H1		233.21	234.28
7N/32W-31M1	359.00	371.36	370.23
7N/32W-7B1		DRY	DRY
7N/33W-36J1	357.00	369.17	368.66
6N/32W-12K2	276.00		304.56
6N/32W-9G1			271.10

WELL ID	DATE	DEPTH TO WATER	FALL 2021	1-YEAR CHANGE
BUELLTON / LOS OLIVOS				
6N/31W-17F1	10/4/2022			
6N/31W-17F3	10/11/2022	41.22		
6N/31W-7F1	10/7/2022	82.16	81.11	(1.05)
6N/32W-2Q1	10/4/2022	62.17	63.08	0.91
SANTA RITA / SANTA ROSA				
6N/32W-11L4	10/4/2022	39.89		
6N/32W-16P(?)	10/4/2022	47.77	49.05	1.28
6N/32W-18H1	10/4/2022	32.72	34.48	1.76
7N/32W-31M1	10/6/2022	82.37	82.25	(0.12)
7N/32W-7B1				
7N/33W-36J1	10/6/2022	135.28	135.11	(0.17)

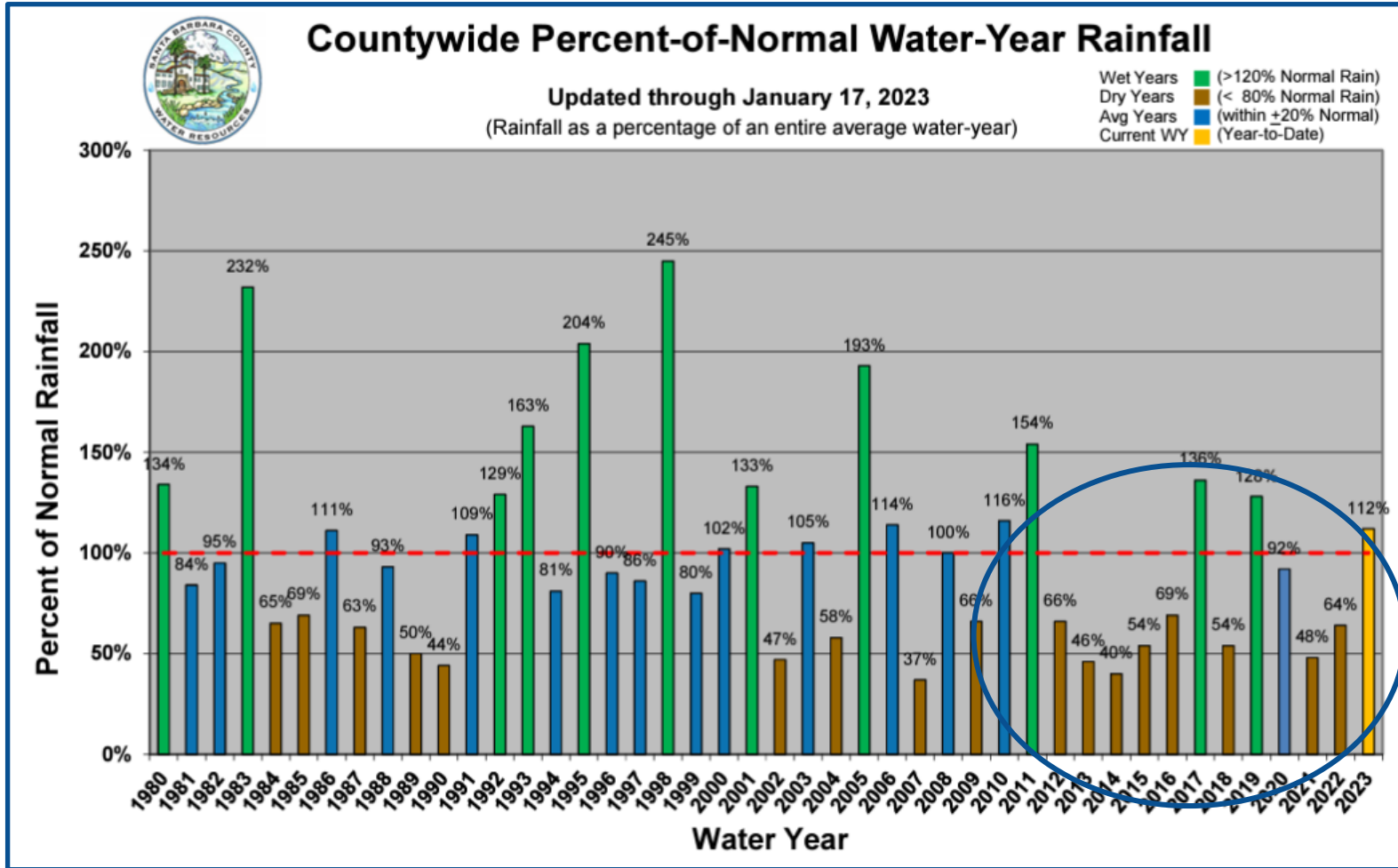
CMA REPRESENTATIVE WELL MEASUREMENTS

WELL ID	SGMA NAME	MINIMUM THRESHOLD	WATER LEVEL ELEVATION (FT) SPRING 2022	WATER LEVEL ELEVATION FALL 2022
6N/31W-7F1	SYWATER 90	292.00	305.12	299.65
7N/32W-31M1	SYWATER 75	359.00	371.36	370.23
7N/33W-36J1	SYWATER 82	357.00	369.17	368.66
6N/32W-12K2	SYWATER 909	276.00		304.56

Highlighted wells are identified as representative wells in the GSP

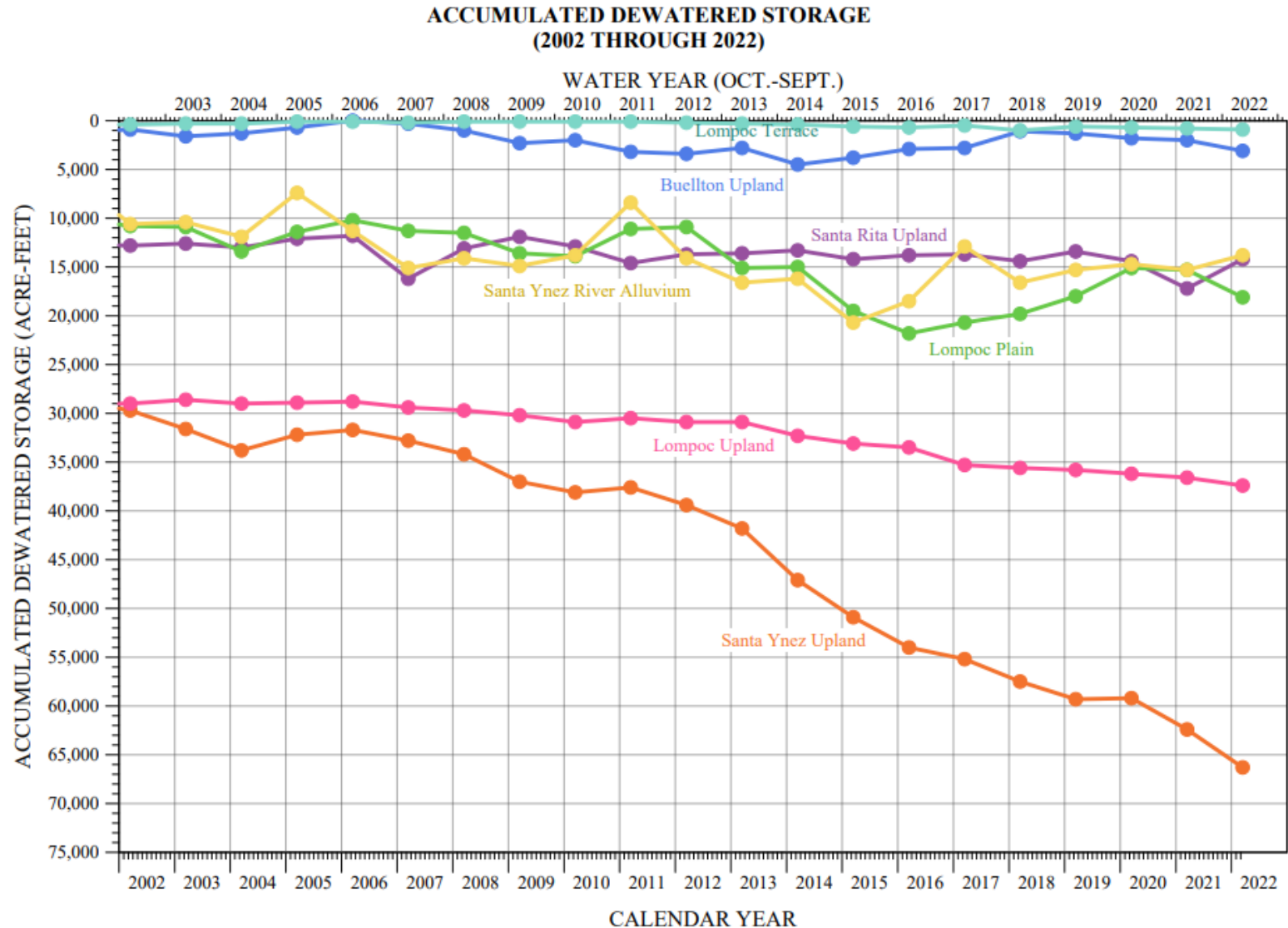
All representative wells had measured water levels above Minimum Threshold

PRECIPITATION TREND



- 2021 Climate Normal Report from NOAA indicates warmer than average temperatures, and a 10% decrease in average annual precipitation in the Southwest.
- 9 of the last 12 years had below average precipitation.
- 5 of the last 12 years were near 50% or less of normal

SANTA YNEZ BASIN CUMULATIVE CHANGE IN STORAGE



CMA Area:
Buellton Upland

Figure from 2021-2022 Santa Ynez Water Conservation District Annual Report.

CUMULATIVE CHANGE IN STORAGE

SANTA YNEZ BASIN % NORMAL PRECIPITATION

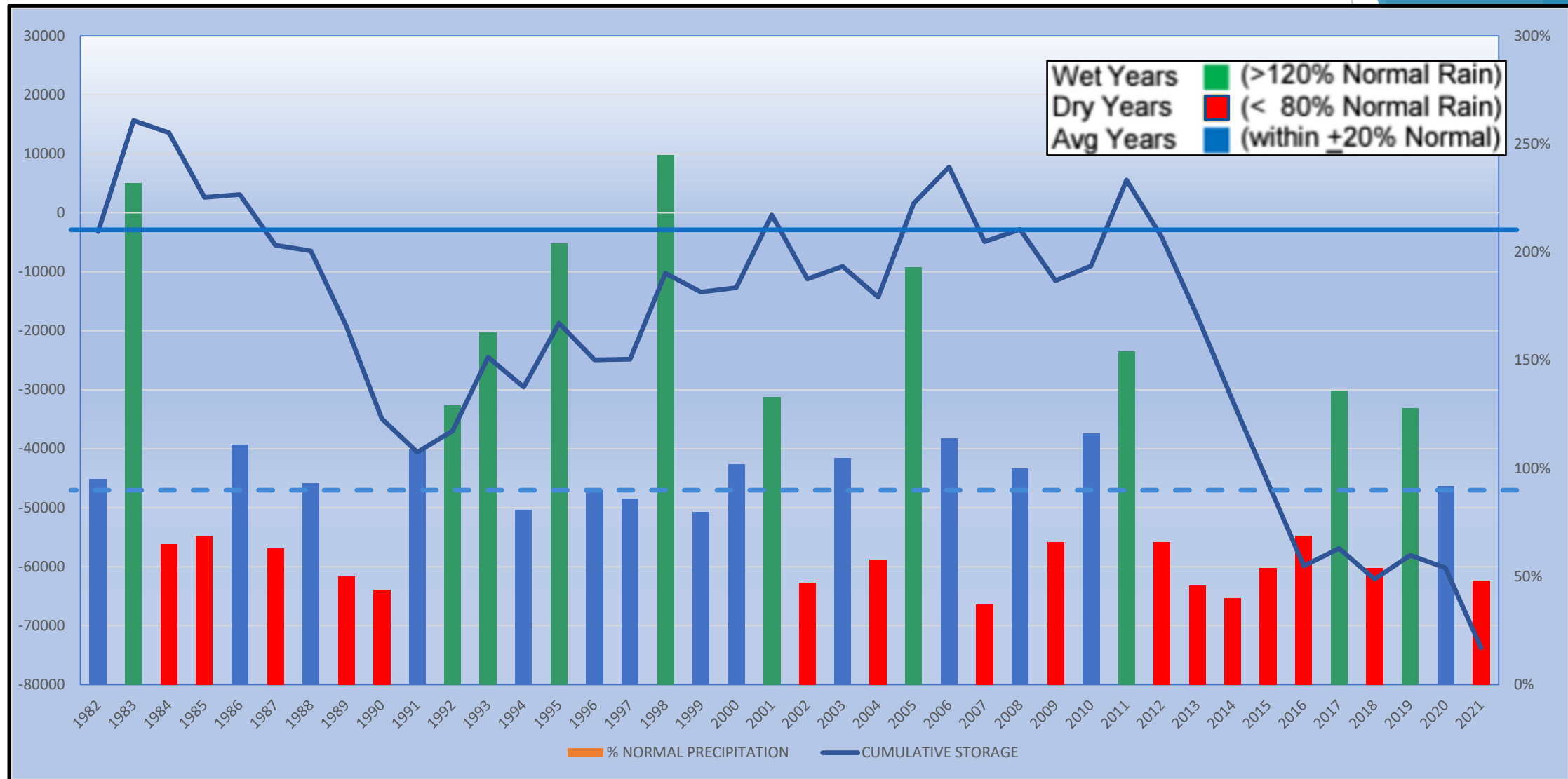
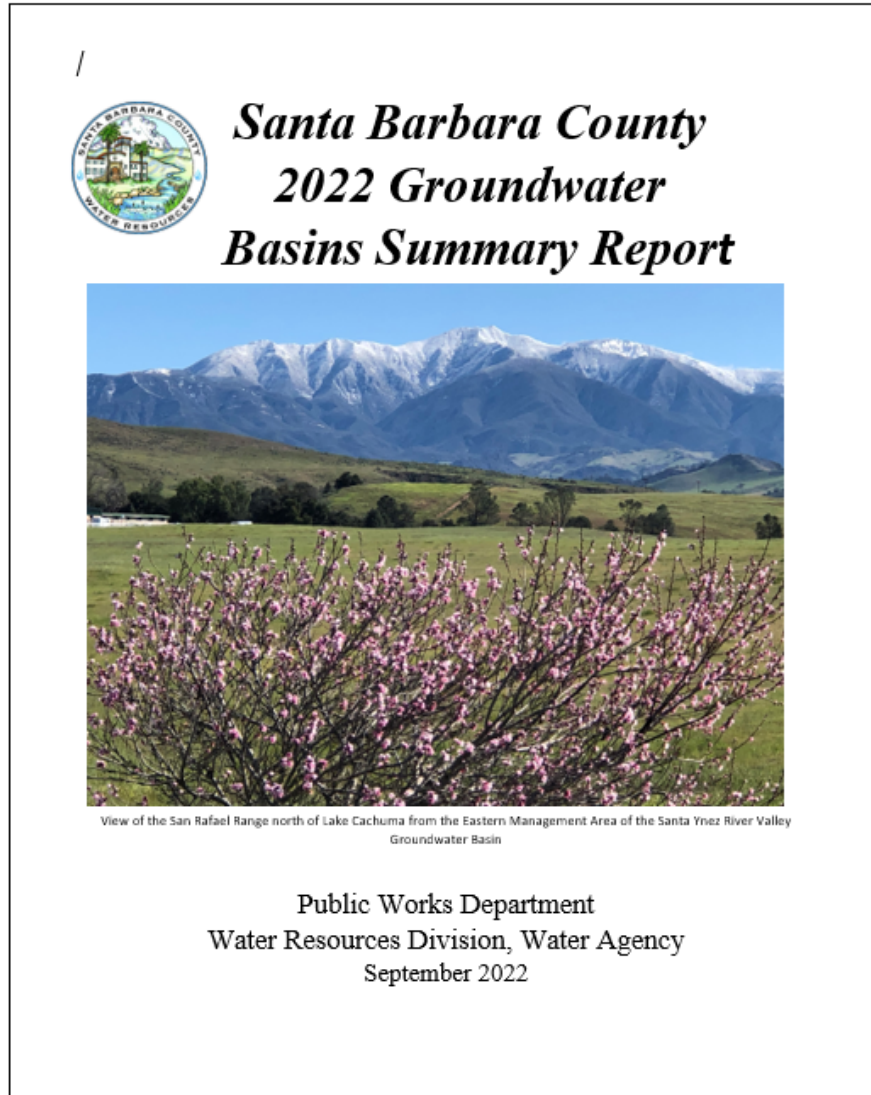


Figure made by Matt Scudato from Santa Barbara County Water Agency.

AVAILABLE BASIN INFORMATION



GROUNDWATER IN SANTA BARBARA COUNTY

<https://www.countyofsb.org/2523/Groundwater-in-Santa-Barbara-County>

SANTA YNEZ RIVER VALLEY GROUNDWATER

<https://www.countyofsb.org/2543/Santa-Ynez-River-Valley-Groundwater-Basin>

GEOLOGY & GROUNDWATER

<https://www.countyofsb.org/2543/Santa-Ynez-River-Valley-Groundwater-Basin>

QUESTIONS?

