



CMA GSA

Groundwater Sustainability Agency Fee Study

Board Meeting – April 22, 2025



Agenda

- Review Basin GW Characteristics
- Financial Plan Update
- Proposed Fee structure
- Next Steps



CMA Rate Discussion Methodology Update

Coverage of Basin

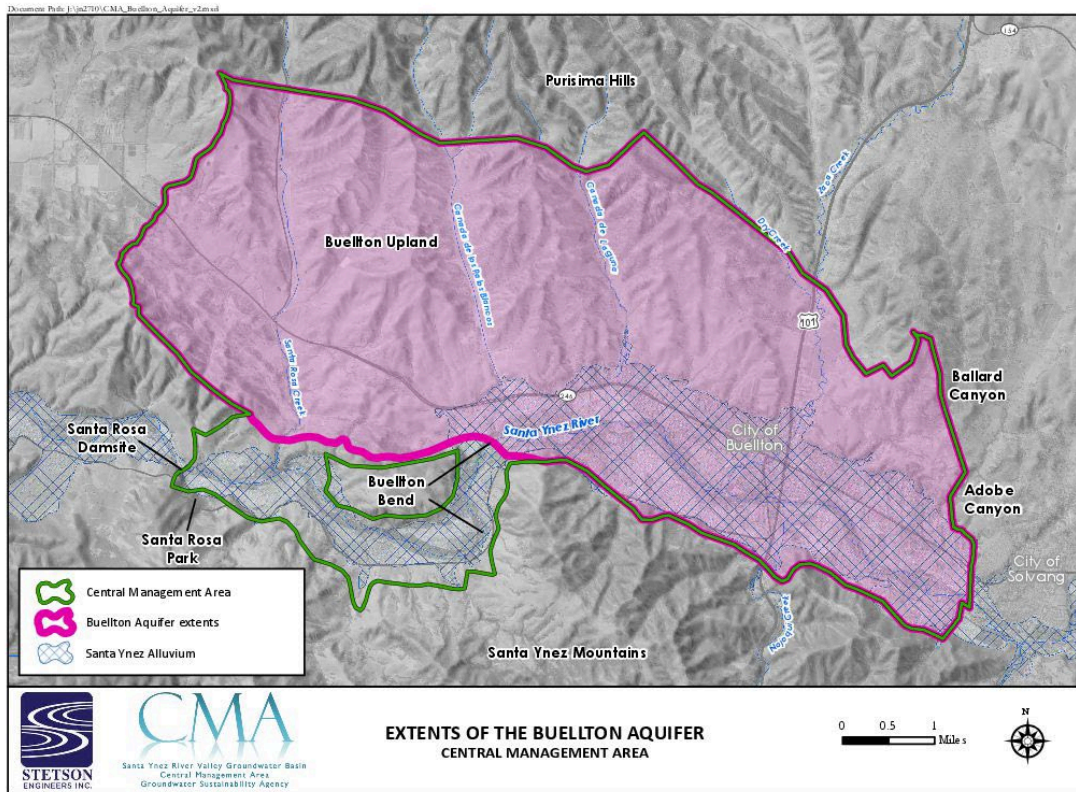


April 2025



Santa Ynez River Valley Groundwater Basin
Central Management Area
Groundwater Sustainability Agency

CMA General Groundwater Setting



“Groundwater’ means water beneath the surface of the earth within the zone below the water table in which the soil is completely saturated with water **but does not include water that flows in known and definite channels [...]**”.

(Wat. Code, § 10721, subd. (g).)

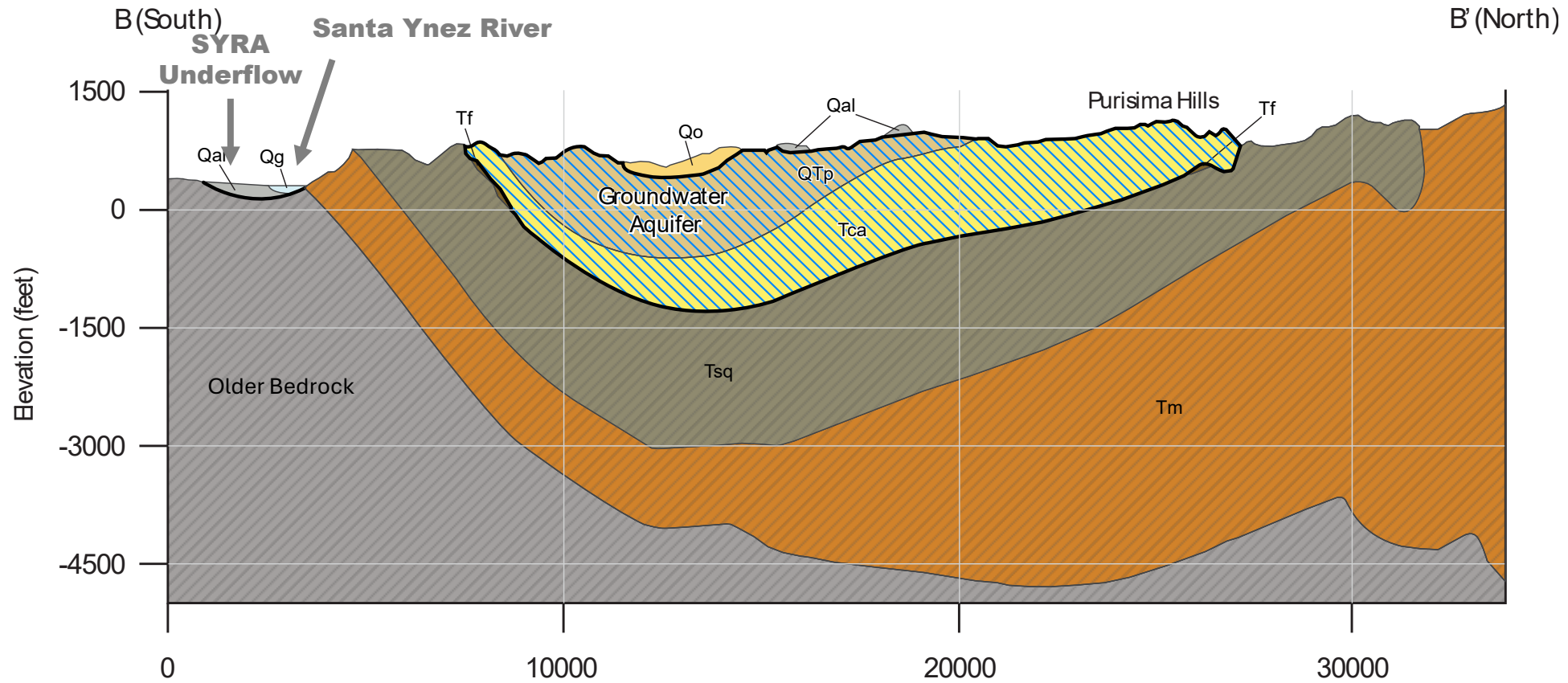
- SGMA requires coverage up to DWR defined basin boundary.
(E.g., Wat. Code §10724, §10727, §10727.6, 22 CCR §§ 355.4)
- Some GSA costs are fixed and independent of actual groundwater use.

EXAMPLE:

- Buellton Aquifer Covers most of the CMA. In some areas the Buellton Aquifer underlies the Santa Ynez River Alluvium.
- Flow of Santa Ynez River flow through alluvium in a known and definite channel means it is not SGMA groundwater under SGMA Statute. However, significant effort has and will go into addressing this in the CMA.

Work Required to Accurately Characterize Known and Definite Channel in CMA

Typical Geological Cross Section Above Narrows
Showing Alluvial Channel Separated from Groundwater Aquifer by Non-Water Bearing Formations



deep cross section
2x vertical exaggeration

Annotated Cross Section from Central Management Area GSP
Cross sections based on 3D geologic model Geosyntec (2020).

- **Financial Plan Summary
& Proposed Rates**



Smoothed Cash Flow

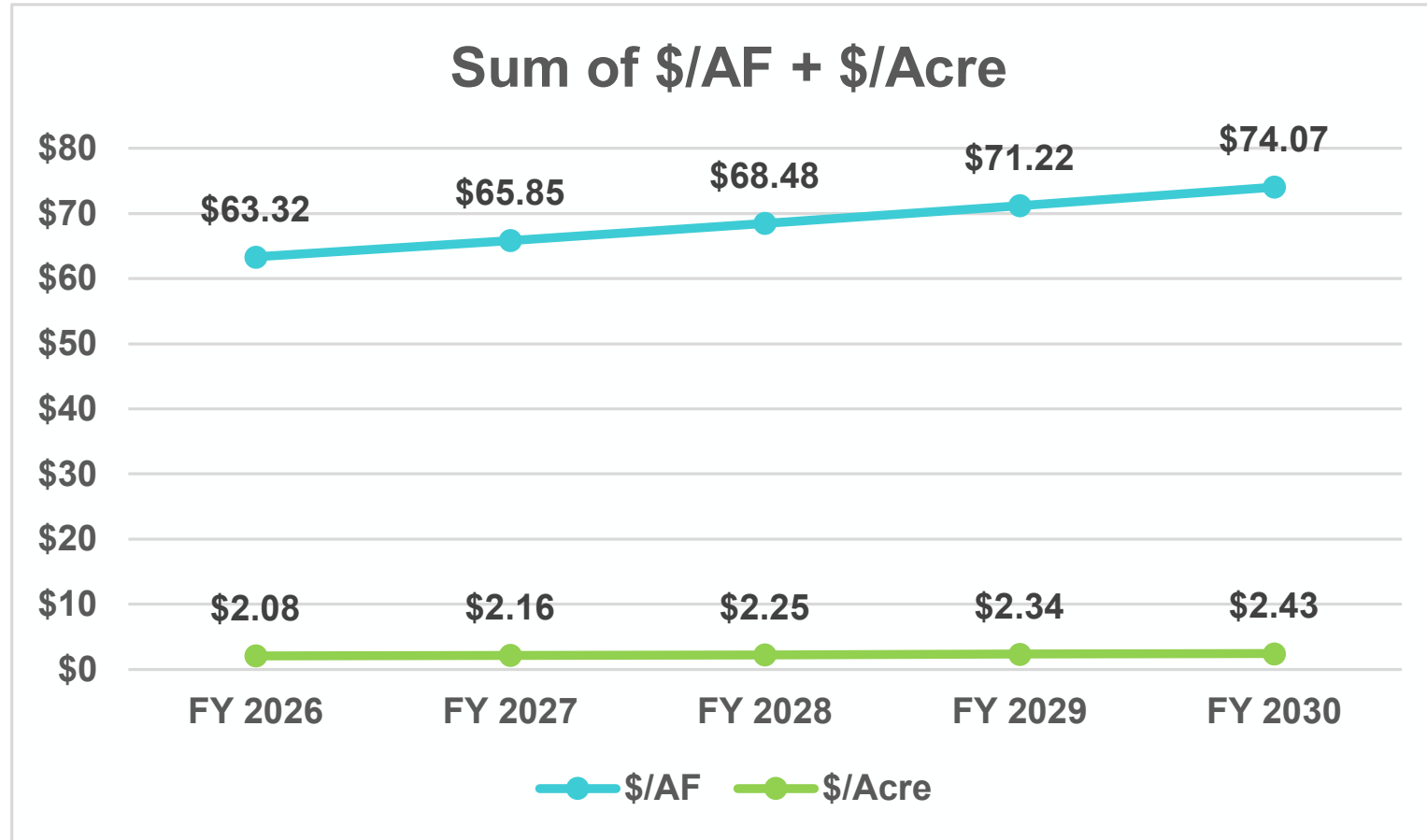
	FYE 2025	FYE 2026	FYE 2027	FYE 2028	FYE 2029	FYE 2030
Beginning Balance	\$135,368	\$146,618	\$311,714	\$222,760	\$134,185	\$47,199
Revenue						
Other	\$224,000	\$1,091,168	\$0	\$0	\$0	\$0
Interest	\$850	\$5,729	\$6,681	\$4,462	\$2,267	\$1,592
GSA	\$0	\$184,815	\$192,207	\$199,896	\$207,891	\$216,207
Total Rev	\$224,850	\$1,281,712	\$198,888	\$204,357	\$210,159	\$217,799
Expenses & Contingency	\$213,600	\$1,116,616	\$287,842	\$292,932	\$297,145	\$184,799
End Balance	\$146,618	\$311,714	\$222,760	\$134,185	\$47,199	\$80,199
Reserve Target *	\$0	\$79,900	\$79,900	\$79,900	\$79,900	\$79,900
Above/Below Target	Above	Above	Above	Above	Below	Above

* Annual reserve target is based on 6 months of operating costs in FYE 2030.

Recommendation

- Groundwater Extraction Fee: Water usage charge/pump charge (\$/AF pumped)
 - Billed usage based on 5-year rolling average starting with FYE 2024 data.
- **AND** Acreage Fee to all benefitting parcels in the CMA including parcels in the city, county, and mutual and other water companies
- Billing on County Tax-roll
- Municipalities/CSDs/Mutual Water Companies: Billed Directly

**Proposed Rates:
Extraction: \$/Acre Foot Pumped (Zone D) + Acreage: \$/Acre (All Parcels)**



Minimum Charge per parcel is for a whole acre and parcels will be grouped in whole acre increments

Sample Bills

Example	AF	Acre	Charge
Ex. 1	0	1	\$2
Ex. 2	5	4	\$325
Ex. 3	53	35	\$3,429
Ex. 4	80	100	\$5,274
Ex. 5	250	55	\$15,944
Ex. 6	300	100	\$19,204
Ex. 7	300	7000	\$33,556

Next Steps

- Receive direction on issuing Prop 218 notice
- Proposition 218 rate adoption process
 - Board meeting to receive report (April 22, 2025)
 - Proposition 218 notice mailed (~April 28, 2025)
 - Public hearing (June 23, 2025)
- Submit to County by August 10, 2025



RAFTELIS

Questions?
